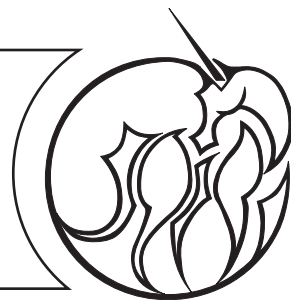


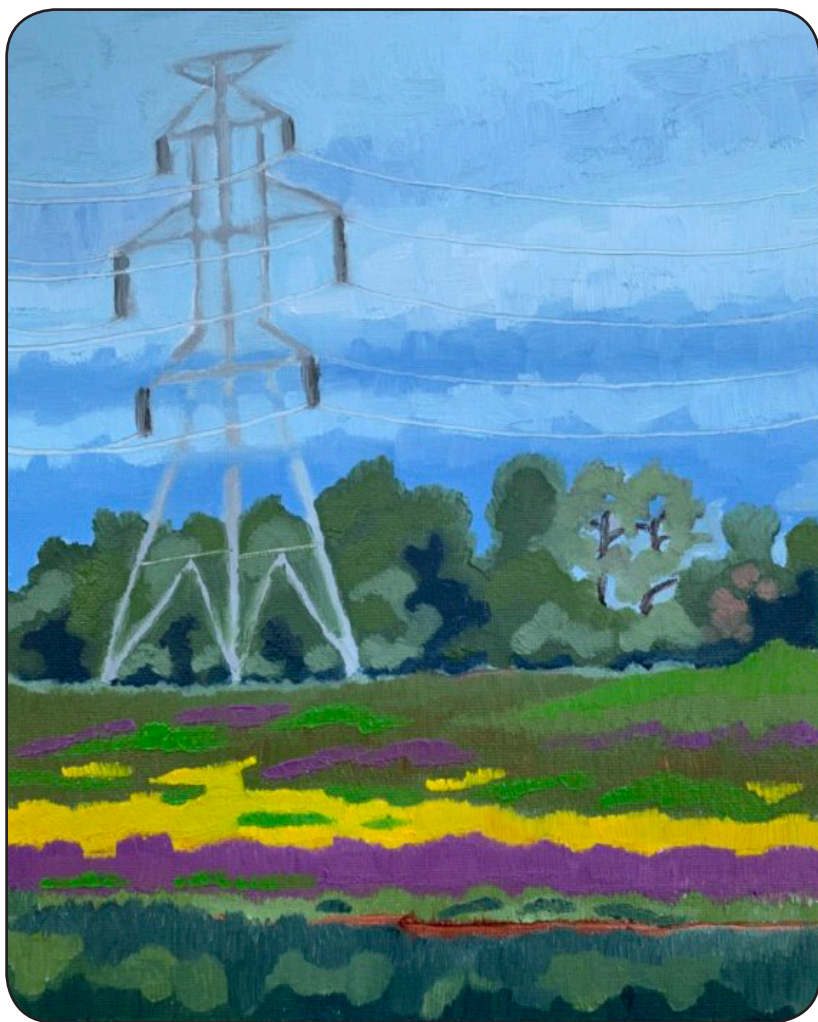
{ the avant-garde }

Katherine N. Crowley Fine Art & Design

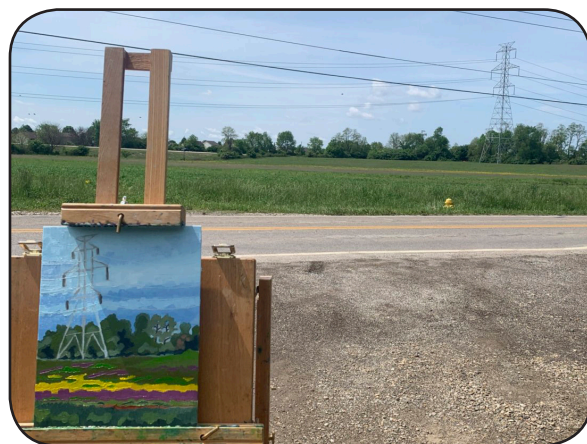


PERIODIC JOURNAL VOLUME XIII No.6 JUNE 2020

{recent work}



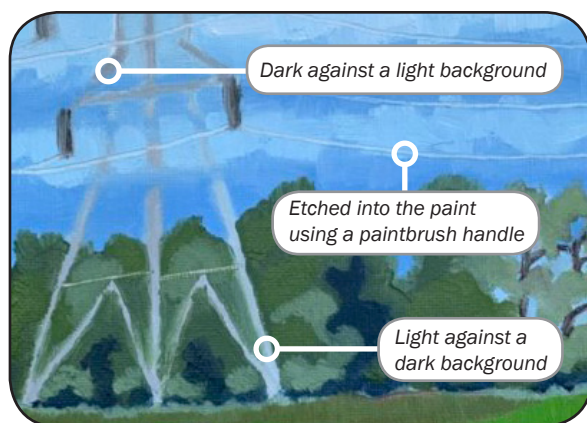
Each year I look forward to summer, when I can paint outdoors. I join a few different groups throughout the season and we travel to various locations around Ohio to see what we can see. These next few pages feature some of my recent work. I consider them each works-in-progress because after working on them in the environment, I have identified changes I would like to make in the studio. Along with each painting is a photograph of the scene and notes on the changes I plan to incorporate at a future time.



High Voltage

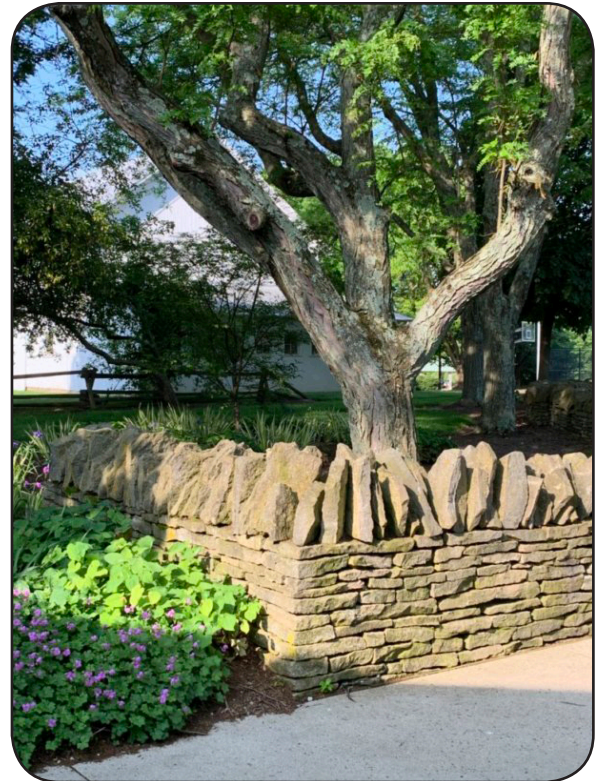
May 23, 2020. Near Three Creeks Metro Park, Ohio.
8" x 10", oil on canvas panel.

I found the field of purple and gold flowers beneath a high voltage electrical tower to be compelling, so I set up my easel in a pull-off near the highway exit to the park.



Notes

I etched the power lines into the oil paint background using the handle of a paintbrush. Knowing that introducing a narrow contour of dark pigment to the blue sky could end up turning the colors to mud, I held off on painting the power lines. I also plan to touch up the structure of the tower which appears to shift from a light gray to a dark gray in relation to the background.

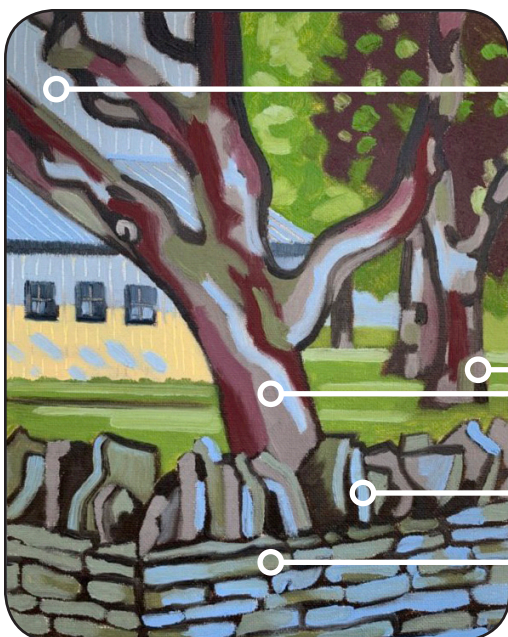
**Tree with Dry-Stacked Wall**

June 7, 2020. Coffman Park, Dublin, Ohio. 10" x 8", oil on canvas panel.

Dry-stacked walls can be found throughout Dublin, Ohio as an homage to the walls that are prevalent throughout Ireland. I took one look at the wall and told myself, "don't even try; it will drive you insane". But after walking around the park, I kept coming back to the idea of that dry-stacked wall. I decided that to tackle it without getting hung up on too many details, I needed to make a solid drawing before applying any color. I marked in all the elements I wanted to include in the composition using a brown oil paint called Raw Umber. I identified light and dark areas and decided on a limited color palette to balance the composition. The result is an illustrative approach with well-defined shapes, contours, and somewhat muted colors.

Notes

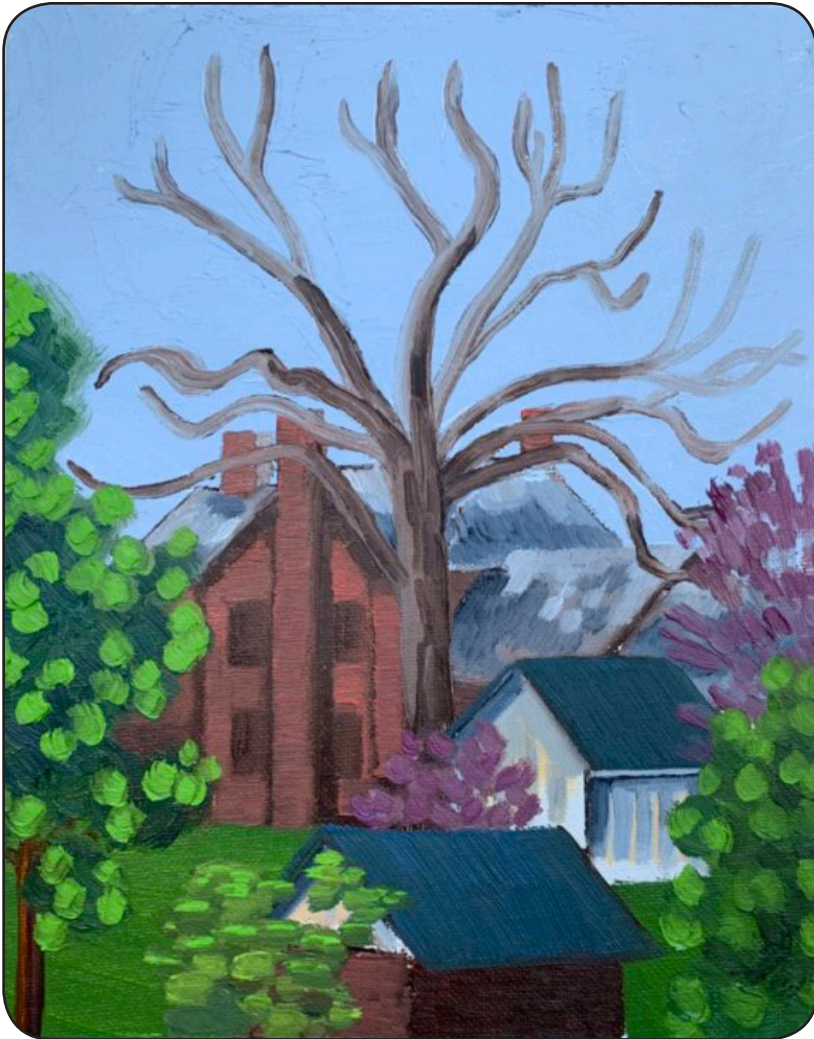
I was satisfied with the painting when I finished it that day but in taking a second look I want to introduce more sunlight to the composition. The barn in the background draws attention due to the yellow lower wall. The upper wall should receive a similar coloration. The dappled sunlight should also appear in the trees and on the rocks on the right side of the wall.



Add yellow to match the sunlight on the lower wall

Add yellow to the trees to show dappled sunlight

Add yellow sunlight to the rocks to create dimension

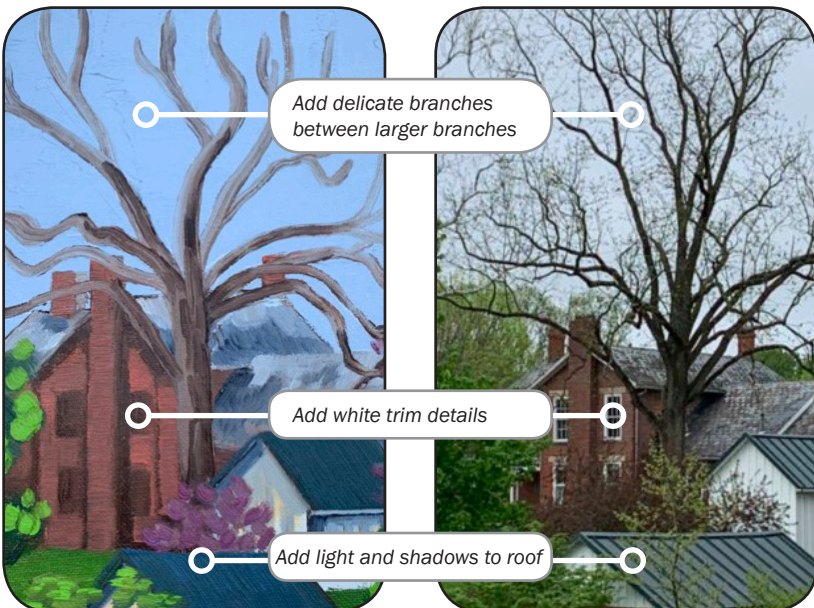
**Tree at Everal Park**

May 16, 2020. Everal Park, Westerville, Ohio.
10" x 8", oil on canvas panel.

This painting marked my first trip outdoors since the weather got cold. It took a bit to get back into the swing of things. The temperature fluctuated throughout the morning and this was the first time the members of Central Ohio Plein Air had to practice social distancing. Of course I decided to paint a complex scene with layers of structures and a grand tree at the center of the composition. I did my best to focus on the lights and darks and determine what "chroma" – or intensity of color – to use in differentiating the natural elements of the scene.

Notes

I started out using a palette knife to paint in the flat light-blue sky. Then I arranged the architecture of the composition. I drew in the large tree with paint knowing that I would let the painting dry before adding in the delicate branches. I avoided painting the white window frames so as not to mix my colors – another task to complete now that the painting has dried. I plan to add highlights to the metal rooftops as well.





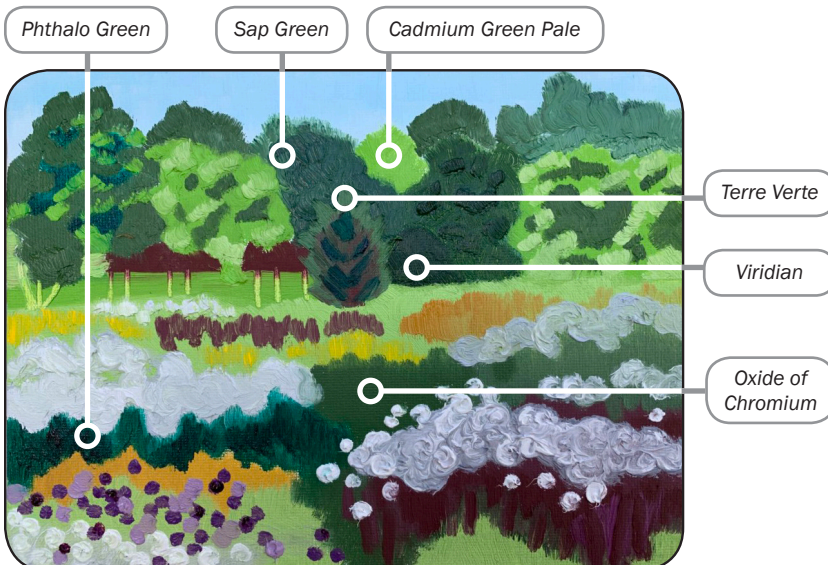
Study with Greens

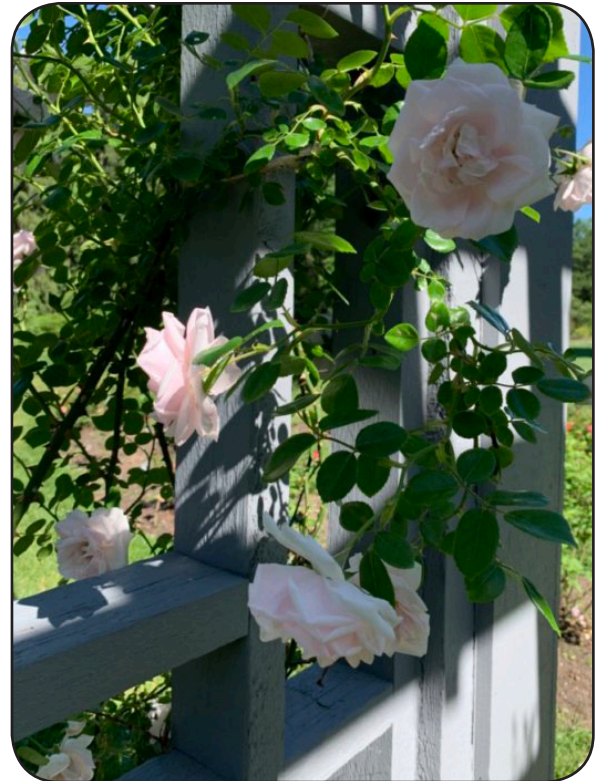
May 30, 2020. Highbanks Metro Park, Lewis Center, Ohio. 8" x 10", oil on canvas panel.

The dominant color of the Meadow at Highbanks Metro Park was green. Some of the tall grass was a yellow color and there were purple flowers dotting the landscape. I had recently purchased a new suite of Winsor and Newton green colors, so I took the opportunity to try them all out.

Notes

I painted with each color directly from the tube and only mixed in white when I needed a lighter value. This is not a recommended practice, but the best way to get to know a color is to use it. In addition to the greens I used Weber's Permalba White, and Winsor and Newton's Terra Rosa, Yellow Ochre, Winsor Yellow, and Winsor Violet.



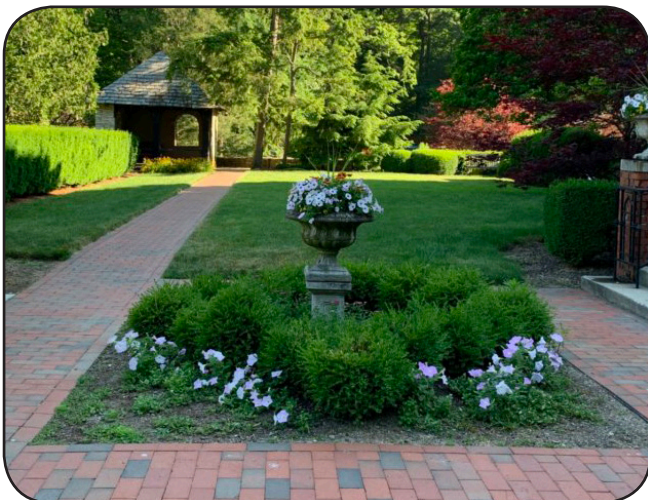
**Peach White Roses**

June 12, 2020. Inniswood Gardens,
Westerville, Ohio. 7" x 5", oil on canvas panel.

I painted these roses in the shade of the trellis of the rose garden at Inniswood Metro Park because it was a very bright and hot day. I took an abstract approach by subtly painting the trellis into the background and then layering the leaves and petals into the composition. I constructed each element by visually isolating a color and marking in a shape. I allowed the colorful shapes to play against one another to create the forms.

Notes

By the time I was finished I was worried that I had over-worked the painting. It seemed as though I went too far in an abstract direction and had created something visually confusing. Then I stepped back. Standing a few more feet away from the painting, the elements seemed to come together. I have decided not to make any additional changes to this painting.



Add value and variation to the background so that it appears to be more dimensional.

Jeffrey Mansion Courtyard

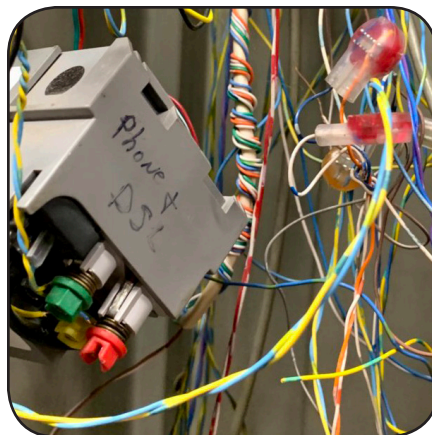
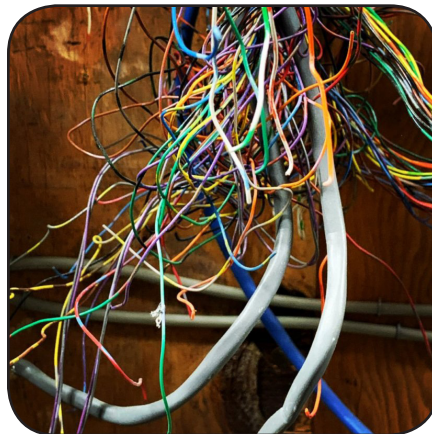
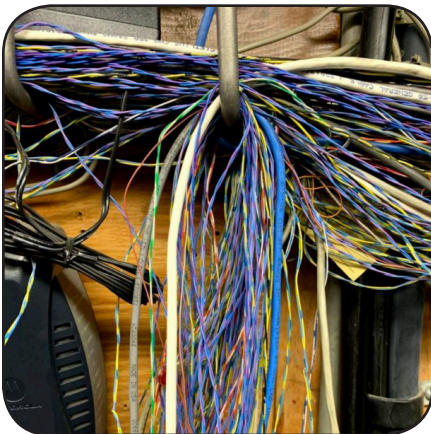
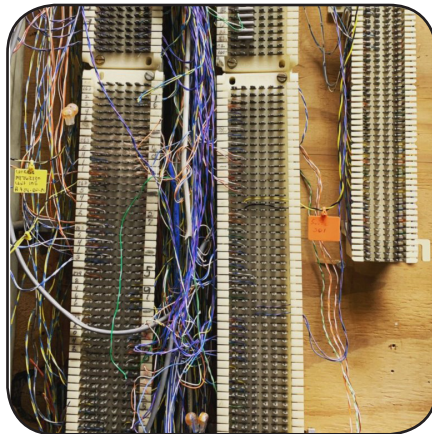
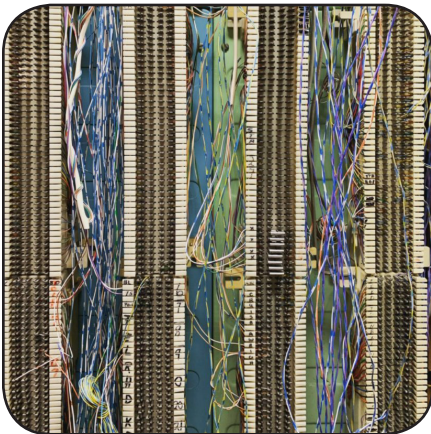
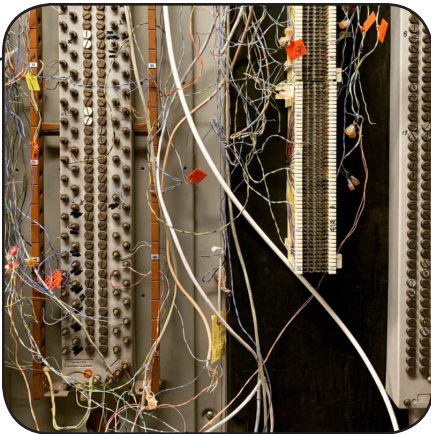
June 21, 2020. Jeffrey Mansion Park, Bexley, Ohio.
8" x 10", oil on canvas panel.

I arrived to find the mansion under construction and none of my friends from Central Ohio Plein Air anywhere to be found. I checked my e-mail and learned that they had relocated to Goodale Park. I decided to stay put and picked a spot with a nice scene but no shade. As soon as I applied enough paint to cover the canvas, I headed home.

Notes

The colors in this piece are very vibrant due to the hard sunlight. The background appears very flat. Though I do not want to add much detail to the background, I will add dark and light variations to add dimension.

{wiring diagram}



In my case, working from home during the COVID-19 quarantine means working from my art studio because that is where my desk is located. It also means upgrading my internet to accommodate the data that the Fortune 500 company I work for requires me to move each day.

When the technician arrived, I was able to get a peek at the inner workings of the telecommunications world. It looks very disorganized to me, though she must have known what was going on because she had me uploading and downloading files at a record pace a few hours later.

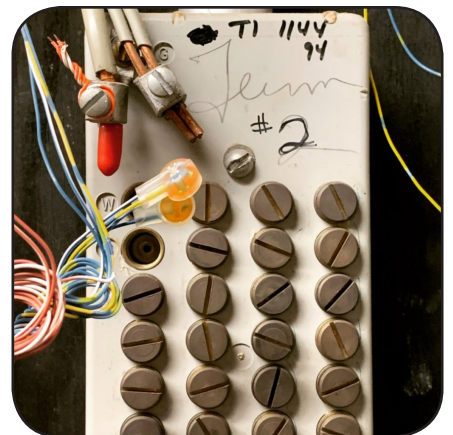
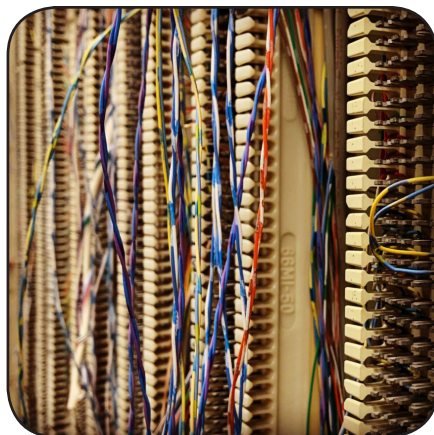
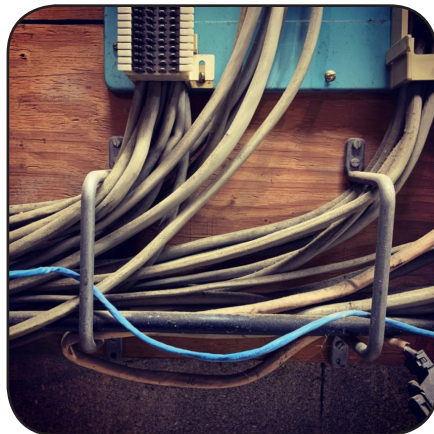
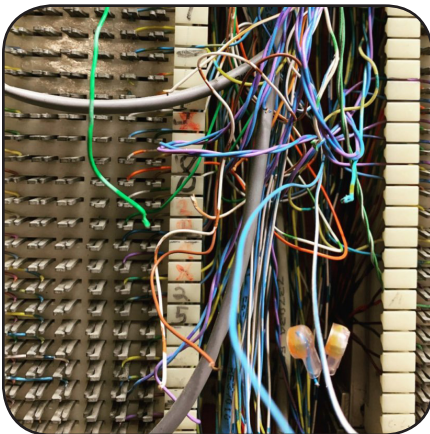
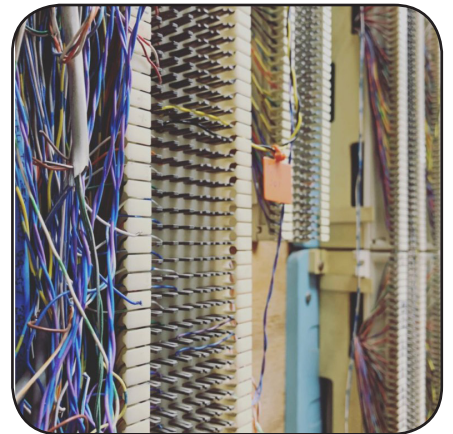
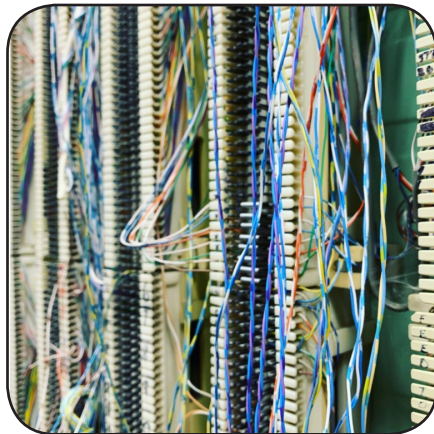
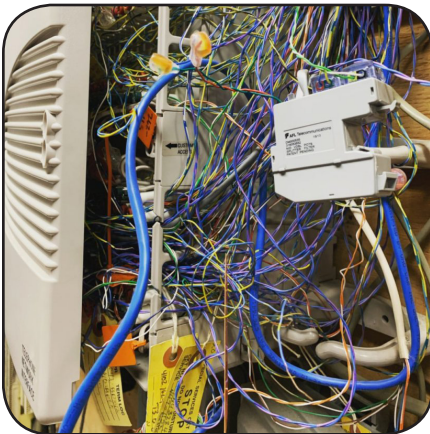
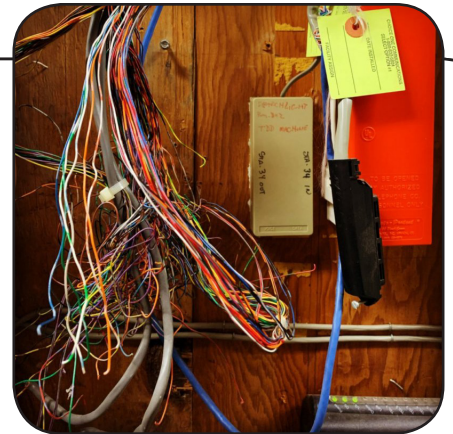
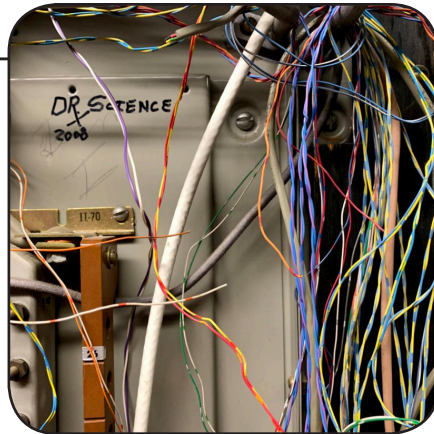
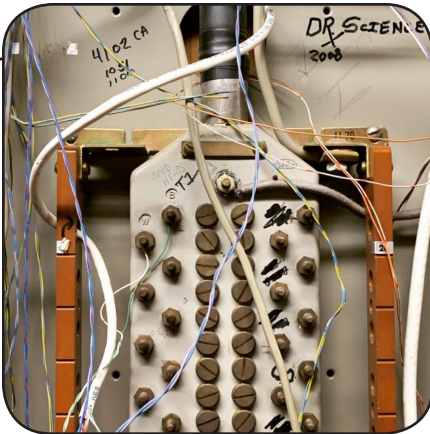
Even though I could not make heads or tails of the jumbled wall of spaghetti, I did find that the colorful wires make for some interesting compositions.

All photographs:
by Katherine N. Crowley,
Instagram via iPhone XR, 2020.

 @kncrowley

{the avant-garde}

Katherine N. Crowley Fine Art & Design



{all around the town}

The Columbus Museum of Art (<http://www.columbusmuseum.org>)
Open June 23rd to members & June 30th to the general public. Pizzuti Collection of CMA is closed, and will reopen in late August or early September, when the fall exhibitions open.

"Art After Stonewall", Through October 4

"Ivy Atoms: 2019 Columbus Comics Residency Exhibition", Ongoing

"Folk Art Road Trip: Travels with Modernism's Utility Infielder", Ongoing

COSI (<http://www.cosi.org>)

Open July 8th to members & July 15th to the general public

"iCuba!", Opens July 8

"DC Super Heroes", Opens July 8

Dublin Arts Council (<http://www.dublinarts.org>)

"Sue King: The Great Outdoors", by appointment through July 24

The High Road Gallery and Studios (<http://www.highroadgallery.com>)

"Carol Hershey: 50 Year Retrospective", by appointment through July 31

McConnell Arts Center (<http://www.mcconnellarts.org>)

The gallery is now open with limited hours

"MAC Faculty Show", Summer 2020

OSU Urban Arts Space (<http://www.uas.osu.edu>)

Online art exhibits & engagement

"Voice:Röst", Through July 10

"Operation Doorstep", July 13-September 11

The Riffe Gallery (<http://www.oac.ohio.gov/Riffe-Gallery/Exhibitions>)

Online art exhibits & engagement

"Ohio Diaspora", Ongoing

{performing arts}

CAPA (<https://www.capa.com>)

COVID-19 Performance Status Updates

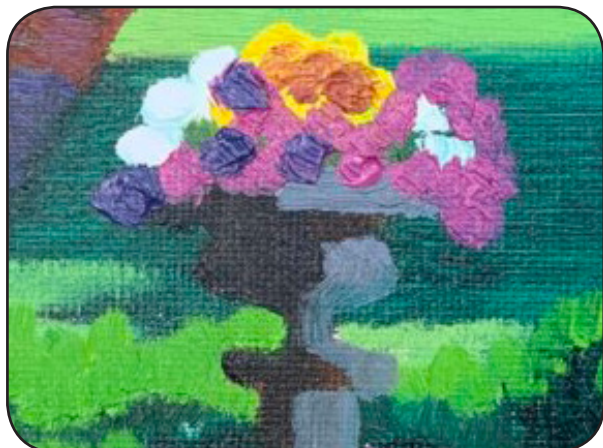
(<https://www.capa.com/home/covid-updates/>)

CATCO (<http://www.catco.org/>)

All performances have been postponed. Virtual play readings available.

Columbus Symphony Orchestra (<http://www.columbussymphony.com>)

Columbus Symphony at home



{and beyond}

The Akron Art Museum (<http://www.akronartmuseum.org>)

Member preview July 16-18; general public opening July 23rd

The Cincinnati Art Museum (<http://www.cincinnatiartmuseum.org>)

The museum is now open with limited hours

"The Paper Sculpture Manual", Ongoing

"do it (home)", Ongoing

"Women Breaking Boundaries", Ongoing

Contemporary Arts Center (<http://www.contemporaryartscenter.org>)

Open June 24th to members & July 1st to the general public.

"Vhils", Through March 7, 2021

"Kahlil Robert Irving", Through August 16

The Cleveland Museum of Art (<http://www.clevelandart.org>)

The museum opens June 30th

"PROOF: Photography in the Era of the Contact Sheet",

Through August 2

"Ilse Bing: Queen of the Leica", Through October 10

The Art Institute of Chicago (<http://www.artic.edu>)

Virtual exhibits & engagements

Detroit Institute of Art (<http://www.dia.org>)

Open July 10th to members & July 15th to the general public.

"Guests of Honor: Frida Kahlo and Salvador Dalí",

Through January 3, 2021

Indianapolis Museum of Art (<http://www.imamuseum.org>)

On June 25, The Garden, The Virginia B. Fairbanks Art & Nature Park, and The Beer Garden will officially reopen to the public

Los Angeles County Museum of Art (<http://www.lacma.org>)

LACMA is temporarily closed. LACMA @ Home offers virtual engagement

Metropolitan Museum of Art, NYC (<http://www.metmuseum.org>)

The Met is currently closed. Experience 5,000 years of art at home.

Museum of Modern Art, New York (<http://www.moma.org>)

"Betye Saar: The Legends of Black Girl's Window",

October 21-January 4, 2020

New Orleans Museum of Art (<http://www.noma.org>)

The Besthoff Sculpture Garden is now open from Wednesday-Sunday

Carnegie Museum of Art, Pittsburgh (<http://www.cmoa.org>)

Reopening to the public on June 29th

"Rachel Rose: Lake Valley" Ongoing

The Warhol, Pittsburgh (<http://www.warhol.org>)

Open to the general public June 30th

The Toledo Museum of Art (<http://www.toledomuseum.org>)

Open to the general public June 30th

"Global Conversations: Art in Dialogue", Through August 26

"Expanded Views II: Native American Art in Focus",

Through December 6, 2020

The National Gallery of Art, Washington, D.C. (<http://www.nga.gov>)

Virtual exhibits & engagements

The Smithsonian American Art Museum & The Renwick Gallery,

Washington, D.C. (<https://americanart.si.edu/>)

The Smithsonian American Art Museum and Renwick Gallery's buildings are closed temporarily, but the museum is always open online

Click here to Visit,
Friend & Follow

