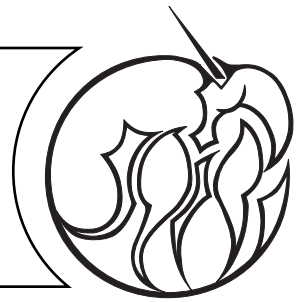


{ the avant-garde }

Katherine N. Crowley Fine Art & Design

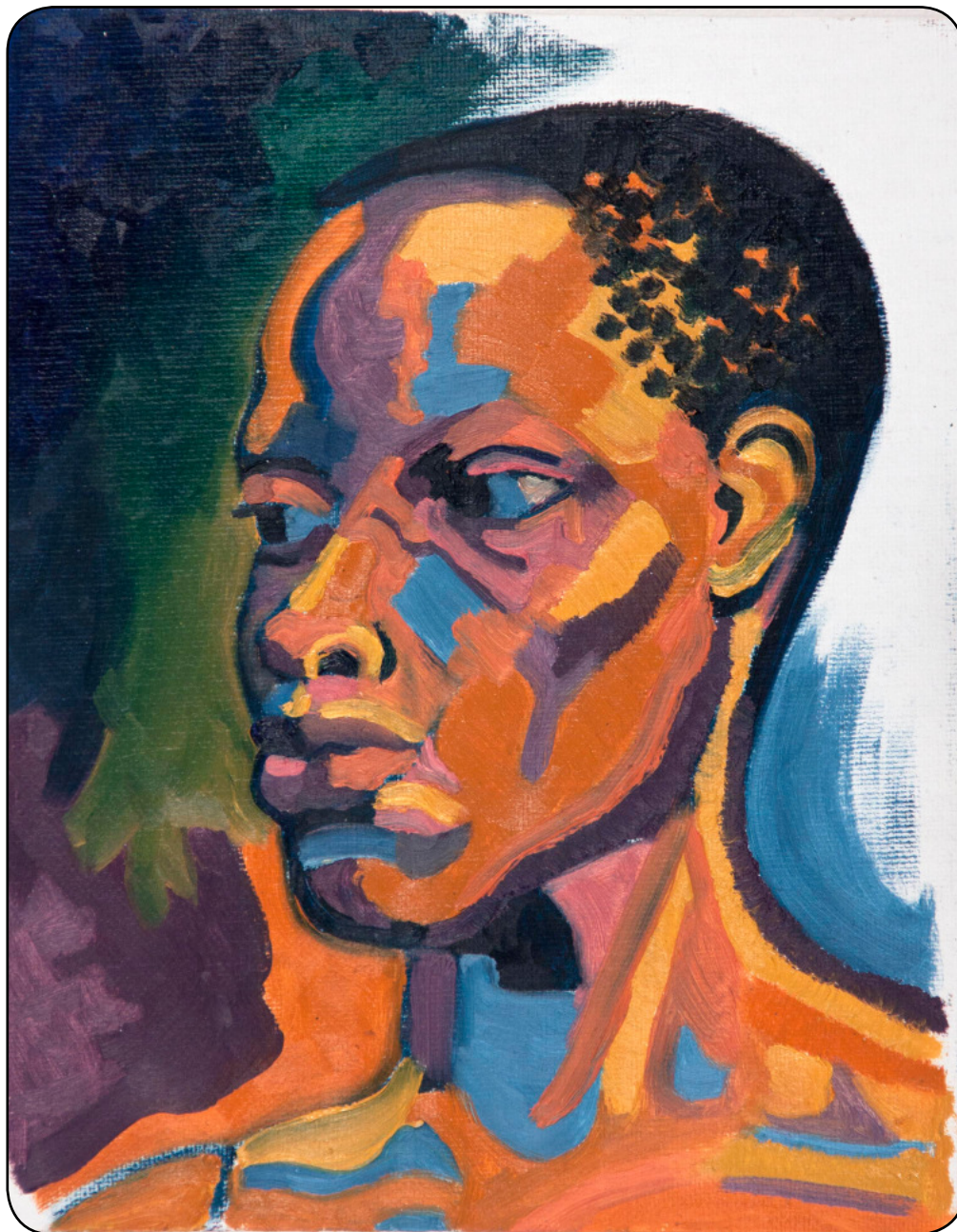


MONTHLY NEWSLETTER VOLUME IX No. 1 LEAP DAY 2016

looking back

{2015}
the year in review

portraiture



Unfinished: Portrait of Naomi, by Katherine N. Crowley, oil on canvas panel, 10" x 8", 2015.

{the avant-garde}

Katherine N. Crowley Fine Art & Design

looking back

portraiture

{2015} the year in review



Portrait of Claire, by Katherine N. Crowley, oil on canvas panel, 10" x 8", 2015.

{the avant-garde}

Katherine N. Crowley Fine Art & Design

looking back

portraiture

{2015}
the year in review



Portrait of Carmen (Study), by Katherine N. Crowley, oil on canvas panel, 10" x 8", 2015.

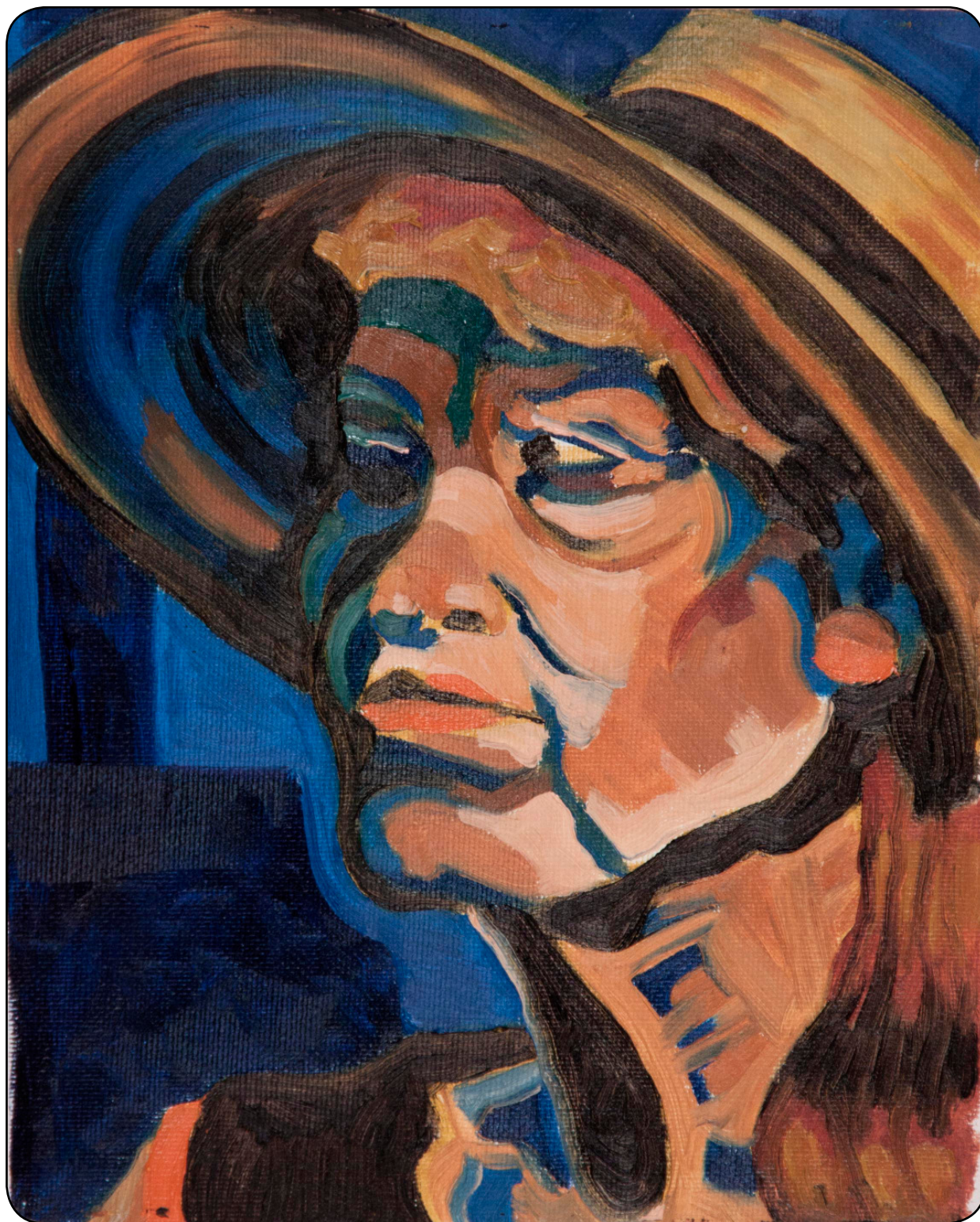
{the avant-garde}

Katherine N. Crowley Fine Art & Design

looking back

portraiture

{2015} the year in review



Unfinished: Portrait of Peggy, by Katherine N. Crowley, oil on canvas panel, 10" x 8" 2015.

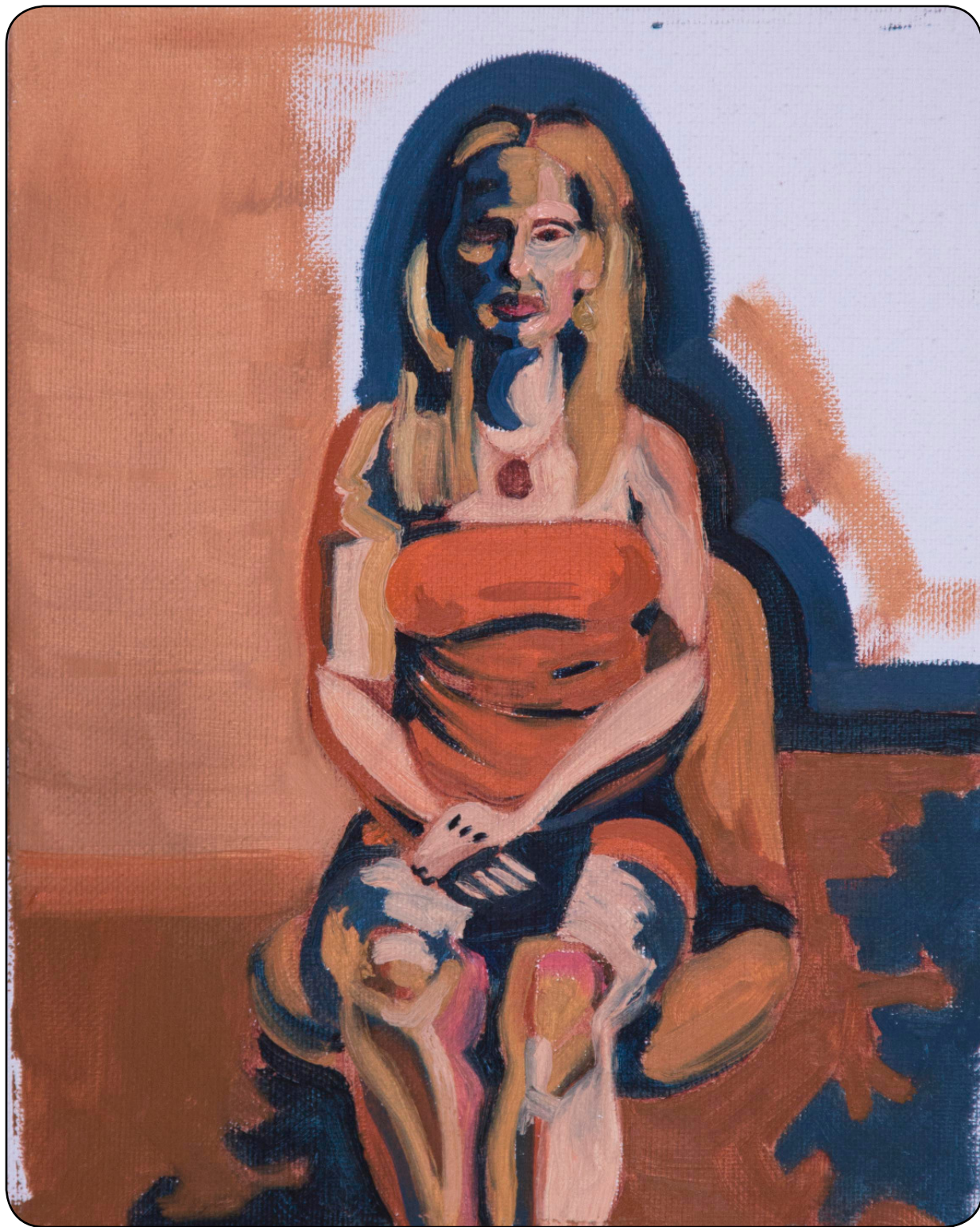
{the avant-garde}

Katherine N. Crowley Fine Art & Design

looking back

portraiture

{2015} the year in review



Unfinished: Portrait of Sarah, by Katherine N. Crowley, oil on canvas panel, 10" x 8", 2015.

{the avant-garde}

Katherine N. Crowley Fine Art & Design

looking back

portraiture

{2015} the year in review



Portrait of Bree with a Green Plant (Study), by Katherine N. Crowley, oil on canvas panel, 10" x 8", 2015.

{the avant-garde}

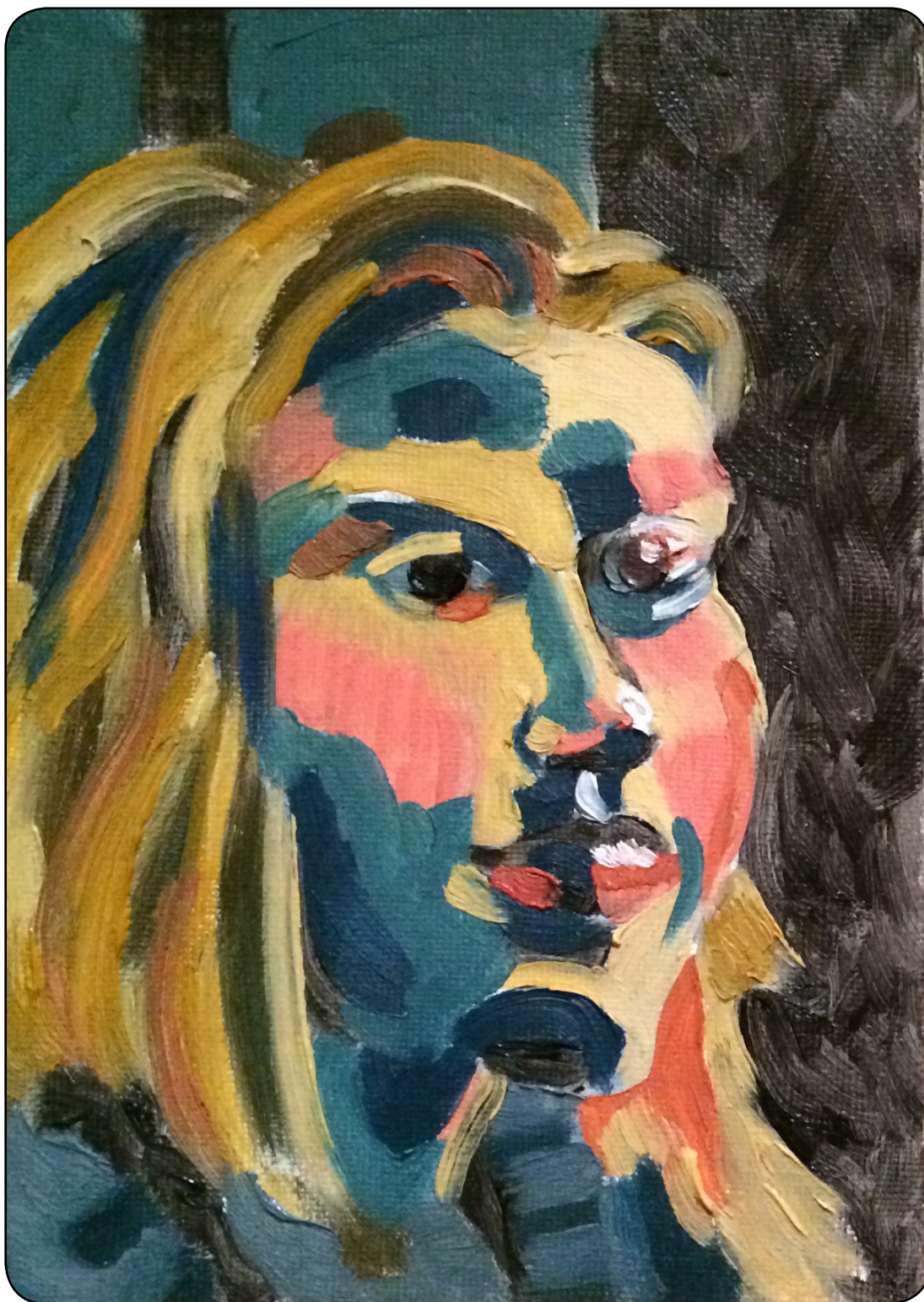
Katherine N. Crowley Fine Art & Design

looking back

portraiture

{2015}

the year in review



Portrait of Ava (Study), by Katherine N. Crowley, oil on canvas panel, 7" x 5", 2015.

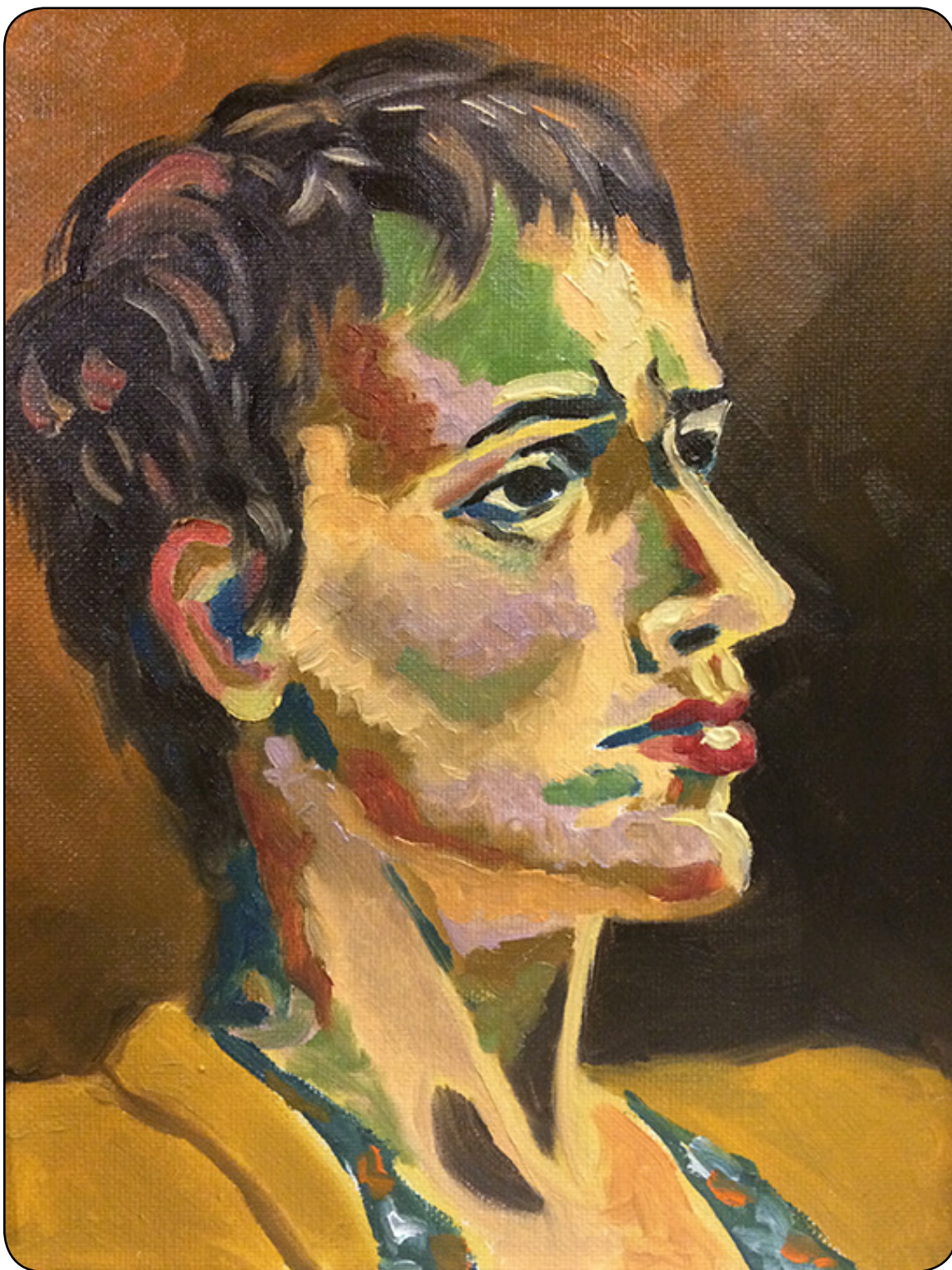
{the avant-garde}

Katherine N. Crowley Fine Art & Design

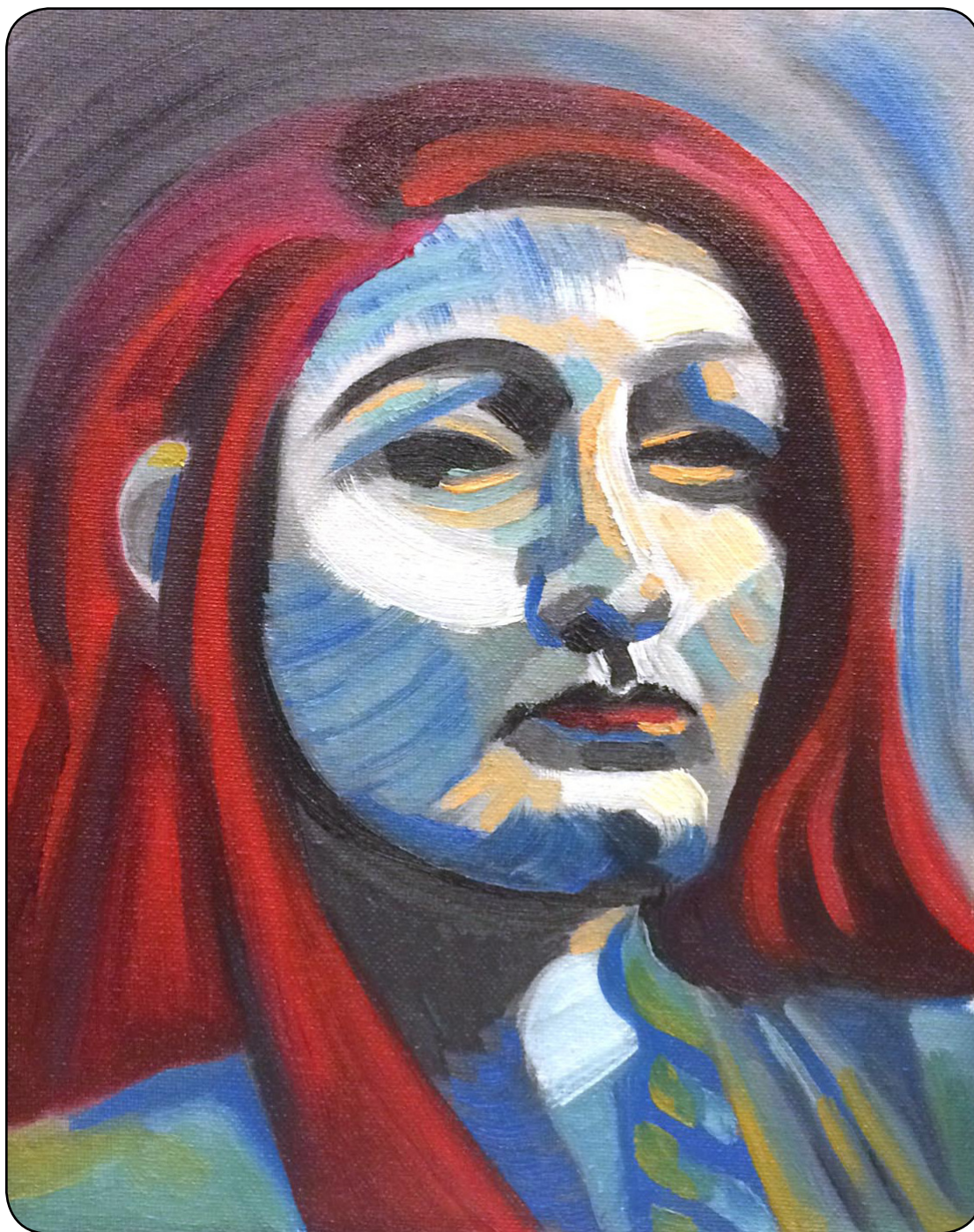
looking back

portraiture

{2015} the year in review



Portrait of Kristan, by Katherine N. Crowley, oil on canvas panel, 10" x 8", 2015.

{2015}
the year in review

Clockwise from top left: *Portrait of Kathryn (Study)*, by Katherine N. Crowley, oil on canvas panel, 10" x 8", 2015; reference photo of the model; line drawing establishing dimensions; identification of light and dark areas; the addition of color.



After completing a portrait that I was unhappy with, I created this one in an attempt to get back to basics. I worked almost exclusively in black and white for the majority of the sitting so that the model's fiery red hair would not act as a distraction. Only when I was satisfied with the dimensions, shape placement, and light and dark areas, did I begin to add primary colors. The final work has a modernist appeal and exhibits the influence of 20th century artist Fernand Leger.

{2015}
the year in review

The Southernmost Point, Key West, by Katherine N. Crowley, oil on canvas panel, 10"x 8", 2015.

My husband and I took a vacation to Key West, Florida early in the summer of 2015. We spent some time at the beach of Fort Zachary Taylor and as the sun started to go down I painted this scene from underneath a pine grove. The setting sun created long purple shadows and the palm trees swayed slowly in the breeze. A palm-covered canopy sits at the right of the painting and the ocean gleams in the background. A peaceful end to a peaceful day.

{2015}
the year in review

View of Downtown Columbus from Audobon Park, by Katherine N. Crowley, oil on canvas panel, 8"x 10", 2015.

This view of the city was painted as a gift for a friend's wedding on the morning of the ceremony. The day was overcast but no rain was predicted. I worked to capture the many colors of the high-rise buildings in the city that the groom and his wife call home. Audobon Park features prairie grasslands which lend an interesting organic foreground to the sleek urban background. The painting is finished in a deep-set frame where mementos from the wedding reception are hidden away.

{the avant-garde}

Katherine N. Crowley Fine Art & Design

looking back

landscapes

{2015} the year in review



Doorway, St. Theresa's, Columbus, Ohio, by Katherine N. Crowley, oil on canvas panel, 8"x 10", 2015.

{the avant-garde}

Katherine N. Crowley Fine Art & Design

looking back

landscapes

{2015} the year in review



Alum Creek, by Katherine N. Crowley, oil on canvas panel, 8"x 10", 2015.

{2015}
the year in review

For Duane Palmo, The Land (or The Chinese Tree) by Katherine N. Crowley, oil on canvas panel, 5"x 7", 2015.

My friend, and fellow artist, Duane Palmo passed away unexpectedly in February of 2015. For years he had invited members of the painting group Central Ohio Plein Air, to paint on his son's property - a rural landscape that the Palmo grandchildren refer to as "The Land". To honor his memory, Mr. Palmo's widow Madelon invited us to again paint at The Land in the late summer. The day was overcast and rainy but a small group of us gathered together to share a potluck lunch and paint. I captured this small scene of a weeping willow on the opposite side of a pond. Fellow painter Sean Wang, originally from China, explained that in Chinese the name for weeping willow translates to "Chinese Tree".

Over Labor Day weekend Madelon Palmo and her family sold Duane's collection of paintings at the Upper Arlington Arts Festival. All proceeds were donated to a scholarship fund to benefit the Columbus College of Art and Design's Saturday Morning Art Program for children. The effort raised over \$15,000 for the scholarship fund.

{the avant-garde}

Katherine N. Crowley Fine Art & Design

looking back

landscapes

{2015} the year in review



Pickerington Ponds, by Katherine N. Crowley, oil on canvas panel, 8"x 10", 2015.



Leatherlips Monument, by Katherine N. Crowley, oil on canvas panel, 5"x 14" diptych (each 5"x 7") 2015.

I created five dyptichs throughout the summer by setting two 5" x 7" panels next to one another on my easel. I am pleased with this composition of the Leatherlips Monument, located at Scioto Park in Dublin, Ohio, which overlooks a cascade of trees and flowers. A small brook bubbles by in the lower-left foreground. The different shades of green and the contours of the spindly trees lend strong graphic elements to the composition. The limestone monument can be seen in the upper left of the painting.

Chief Leatherlips of the Porcupine Clan of the Wyandotte Nation, had signed the Treaty of Greenville in 1795, pledging never again to take up arms against the United States. Shawnee leader Tecumseh and his brother The Prophet, attempted to unite the area tribes to take further action against the Americans and found their efforts hindered by the followers of Leatherlips. Tecumseh called for the execution of Leatherlips and the leader's life was ended with a tomahawk near what is now known as Dublin, Ohio.

looking back

{2015}
the year in review

landscapes

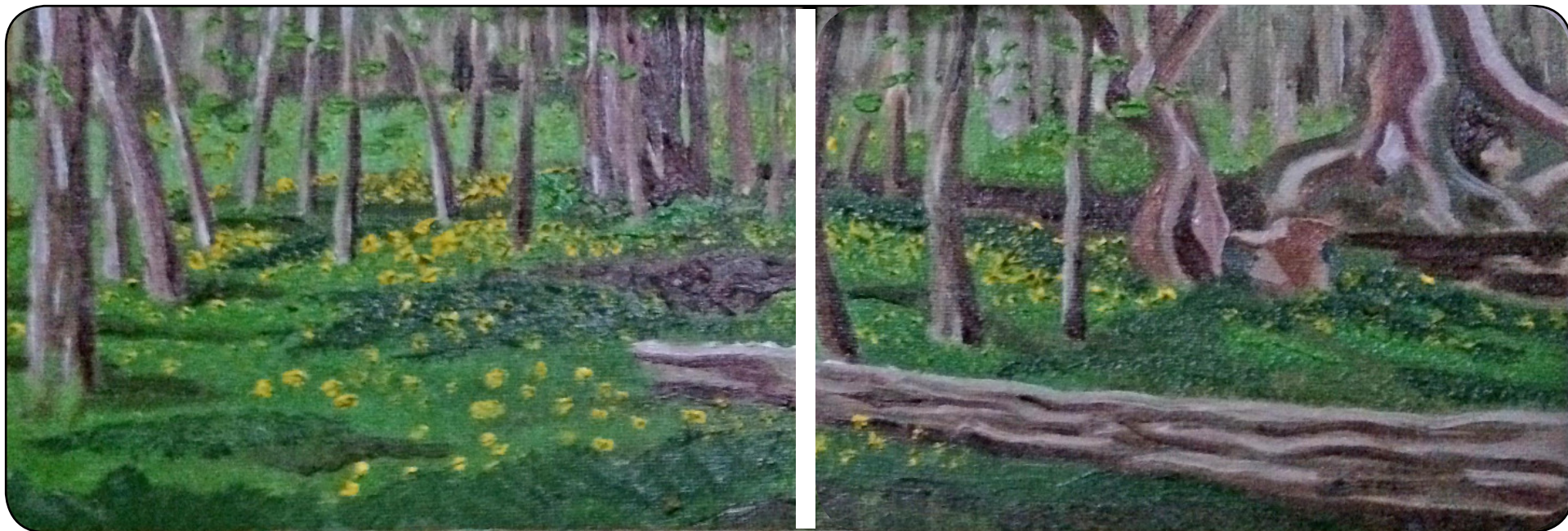


Pickerington Ponds, by Katherine N. Crowley, oil on canvas panel, 5"x 14" diptych (each 5"x 7") 2015.

looking back

{2015}
the year in review

landscapes



Flowers on the Bank of Adena Creek, by Katherine N. Crowley, oil on canvas panel, 5"x 14" diptych (each 5"x 7") 2015.

looking back

{2015}
the year in review

landscapes



The Boulder at Worthington Park, by Katherine N. Crowley, oil on canvas panel, 5"x 14" diptych (each 5"x 7") 2015.

looking back

{2015}
the year in review

landscapes



Canal Winchester, by Katherine N. Crowley, oil on canvas panel, 5"x 14" diptych (each 5"x 7") 2015.

{the avant-garde}

Katherine N. Crowley Fine Art & Design

looking back

still life

{2015} the year in review



Still Life with Oreos (study for a larger work), by Katherine N. Crowley, acrylic and oil on canvas, 2015.

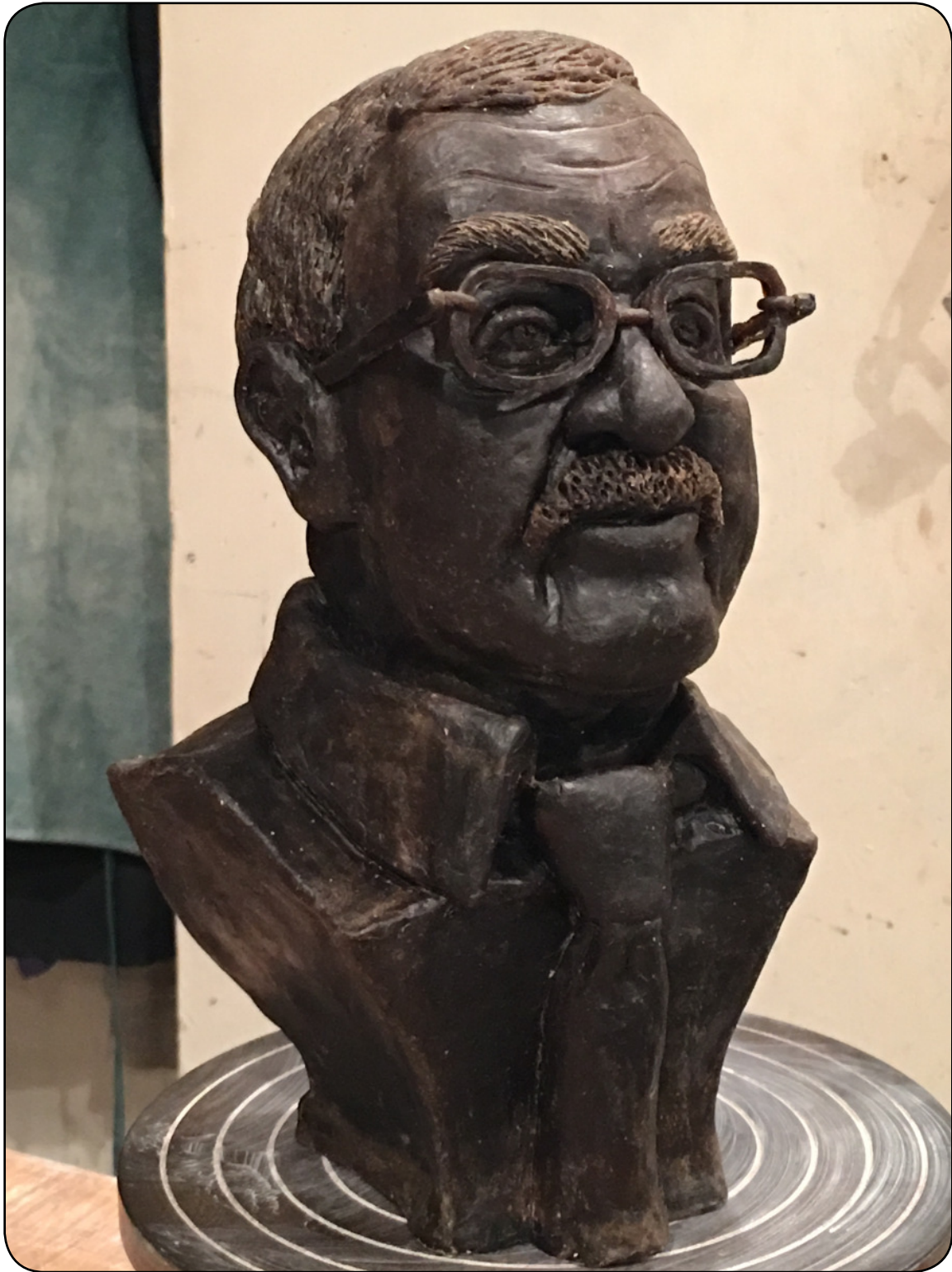
{the avant-garde}

Katherine N. Crowley Fine Art & Design

looking back

{2015}
the year in review

sculpture



Portrait of the Artist's Father (in progress), by Katherine N. Crowley, wax sculpture prepared for bronze casting

{the avant-garde}

Katherine N. Crowley Fine Art & Design

looking back

photography

{2015} the year in review



Humphrey Bogart Takes a Cat Nap, Key West, Florida, by Katherine N. Crowley, digital photography, 2015

{the avant-garde}

Katherine N. Crowley Fine Art & Design

looking back

{2015}
the year in review

photography



Headboard, Hemingway House, Key West, Florida, by Katherine N. Crowley, digital photography, 2015

{the avant-garde}

Katherine N. Crowley Fine Art & Design

looking back

{2015}
the year in review

photography



Along Duval Street, Key West, Florida, by Katherine N. Crowley, digital photography, 2015

{the avant-garde}

Katherine N. Crowley Fine Art & Design

looking back

photography

{2015}

the year in review



The Big Red Barn, Slate Run Historical Farm, Canal Winchester, Ohio, by Katherine N. Crowley, Instagram, 2015

{the avant-garde}

Katherine N. Crowley Fine Art & Design

looking back

{2015}
the year in review

photography



Clutch of Ducklings, Slate Run Historical Farm, Canal Winchester, Ohio, by Katherine N. Crowley, Instagram, 2015

{the avant-garde}

Katherine N. Crowley Fine Art & Design

looking back

photography

{2015}
the year in review



Drill Press, Slate Run Historical Farm, Canal Winchester, Ohio, by Katherine N. Crowley, Instagram, 2015

{the avant-garde}

Katherine N. Crowley Fine Art & Design

looking back

photography

{2015}

the year in review



Assorted Tools, Slate Run Historical Farm, Canal Winchester, Ohio, by Katherine N. Crowley, Instagram, 2015

{the avant-garde}

Katherine N. Crowley Fine Art & Design

looking back

photography

{2015}

the year in review



Carolina Rib King, Jazz & Rib Fest, Columbus, Ohio, by Katherine N. Crowley, Instagram, 2015

{the avant-garde}

Katherine N. Crowley Fine Art & Design

looking back

photography

{2015}

the year in review



Firefighter, Jazz & Rib Fest, Columbus, Ohio, by Katherine N. Crowley, Instagram, 2015

{the avant-garde}

Katherine N. Crowley Fine Art & Design

looking back

photography

{2015}

the year in review



Decorated Ceiling, The Detroit Institute of Arts, Detroit, Michigan, by Katherine N. Crowley, Instagram, 2015

{the avant-garde}

Katherine N. Crowley Fine Art & Design

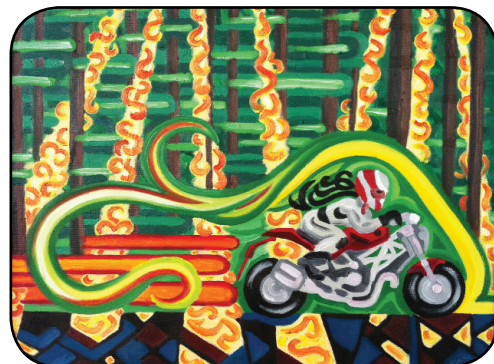
looking back

exhibits

{2015}
the year in review

{2wheels
+ motor:}
a fine art
exhibition

@
the
national
motorcycle museum



2 Wheels + Motor

Through April 2015

The Motorcycle Hall of Fame and Museum

13515 Yarmouth Dr., Pickerington, Ohio 43147

<http://www.motorcyclemuseum.org/>

2 Wheels + Motor

May 2015-May 2016

The National Motorcycle Museum

102 Chamber Drive, Anamosa, Iowa

<http://www.nationalmcmuseum.org>

Summers End

Worthington Area Art League All-Member
Group Show

September 13-October 27, 2015

The Church at Mill Run

3500 Mill Run Drive, Hilliard, Ohio 43026

<http://www.artinview.com>

The Ohio State Fair Fine Arts Exhibition

July 29-August 9, 2015

The Cox Fine Arts Center

Ohio Expo Center & State Fairgrounds

717 E 17th Avenue, Columbus, Ohio 43211

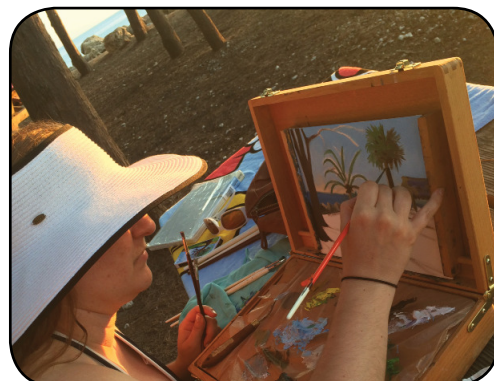
<http://www.ohiostatefair.com>

The Worthington Area Art League at Motorist Mutual Insurance Company

June 19-July 30, 2015

471 East Broad Street, Columbus, Ohio 43215

<http://www.artinview.com>



Top: *Racin'*, by Katherine N. Crowley, oil on canvas, 2014.

Middle: At work in Key West.

Bottom: Katie with her painting *Portrait of Elise* at the Ohio State Fair Fine Arts Exhibition.

Click here to Visit, Friend & Follow

